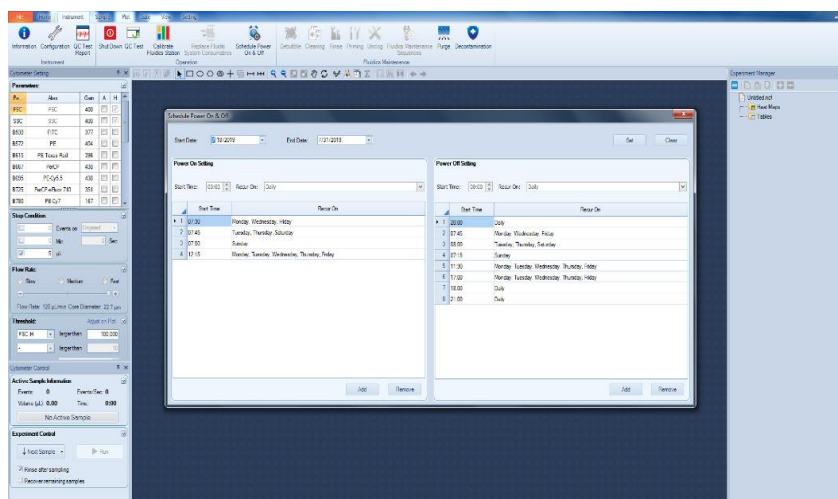


NovoCyte & Quanteon long term storage > 4 weeks

For NovoCyte Quanteon & NovoCyte Advanteon users:

- If the instrument will be **turned off for less than 1 month** it is recommended to use the automatic Start Up and Shut Down scheduler to turn the instrument on and off at least once a week. You can find this under the Instrument tab > Schedule Power On & Off. Here you can schedule the instrument to start and shut down on a specific schedule, please schedule this to happen weekly. Also, verify the fluidic containers are full and the waste container is empty.



- If the instrument will be **turned off for more than 1 month** it is recommended is to purge the instrument of all fluids. The detailed instructions for performing this procedure can be found in the NovoCyte Quanteon and NovoCyte Advanteon Maintenance Guides. This guide can be found either online (link below) or in the NovoExpress folder on the computer workstation: C:\Program Files (x86)\NovoExpress\Documents
- <https://www.aceabio.com/resources/flow-cytometry-resources/?tab=manuals>

For NovoCyte users:

- NovoCyte instruments do not perform automatic start-up and shut down. Therefore, the NovoCyte must be manually turned on and off once a week. If the instrument will not be used for more than 2 weeks and manual on and off is not practical, it is recommended to purge the instrument as outlined in the NovoCyte Maintenance guide. This guide can be found either online (link below) or in the NovoExpress folder on the computer workstation: C:\Program Files (x86)\NovoExpress\Documents
- <https://www.aceabio.com/resources/flow-cytometry-resources/?tab=manuals>