

# FlowCytes®

Synthetic White Blood Cells

**OLS**  
OMNI Life Science

## Level up from using cells



Gain more confidence in instrument settings with reliable and precise controls



Consistent, predictable lot-to-lot performance regardless of geolocation/multisite studies.

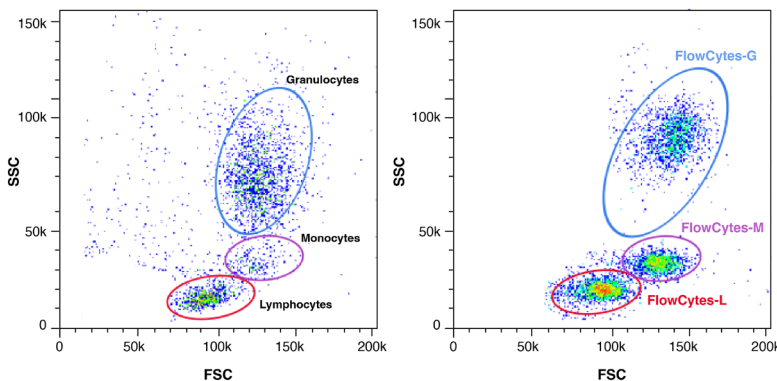


Get reliable and quality data fast, without the headaches



Enhanced sensitivity with easier gating

Stop depending on cells for set up. FlowCytes® set a new standard for instrument calibration and traceability.



Isolated PBMCs

FlowCytes® PBMC mimics

FlowCytes® are the ideal alternative to using cell controls. Instantly and easily mimic lymphocyte, monocyte, and granulocyte populations to calibrate instruments or to QC assays.

Ensuring that instruments are at peak performance and consistent over time is critical to generating quality flow cytometry data. Slingshot's technology uniquely solves this by combining ease of use, accuracy, and consistency to the complicated world of instrument calibration.

Our shelf-stable synthetic cells are produced with incredibly high precision which translates to minimal lot-to-lot variability and consistent precision. FlowCytes® are the ideal solution to ensure that the most advanced flow cytometers are always at peak performance.

### The Slingshot Advantage

- + Level-up with truly cell-like performance.
- + Our synthetic cells match the optical, fluorescence, and biochemical features of cells
- + Customizable to any cell population
- + Precisely control the level of key biomarkers

© 2022 Slingshot Biosciences, Inc. All rights reserved. Unless otherwise noted, Slingshot Biosciences, the Slingshot Logo and all other trademarks are property of Slingshot Biosciences, Inc. For Research Use Only. Not for use in diagnostic or therapeutic procedures. Not for resale.

Contact OLS OMNI Life Science - Your Partner in Cell Research

OLS OMNI Life Science GmbH & Co. KG  
Karl-Ferdinand-Braun-Straße 2  
28359 Bremen, Germany  
Phone: +49 421 27 61 69 0  
info@ols-bio.de • www.ols-bio.com

OLS OMNI Life Science GmbH  
Laufenstraße 90  
4053 Basel, Switzerland  
Phone: +49 421 27 61 69 0  
info@ols-bio.ch • www.ols-bio.com

**OLS**  
OMNI Life Science