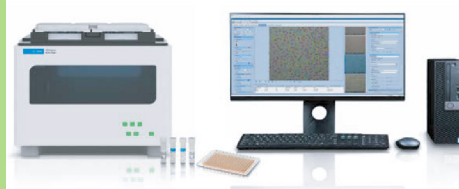


Drive Key Insights and Discoveries with New Live Cell Analysis Applications for eSight

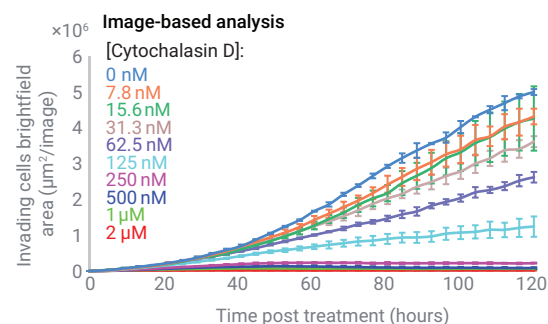
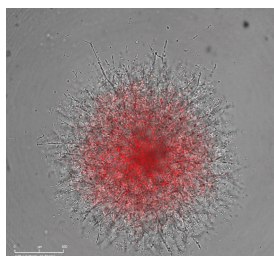


Immuno-oncology and cell function

3D spheroid invasion

Study invasive potential of tumor spheroids over time as you measure and quantify metastatic potential by label or label-free analysis. Investigate response to treatments and the inhibitory effect on invasion and progression.

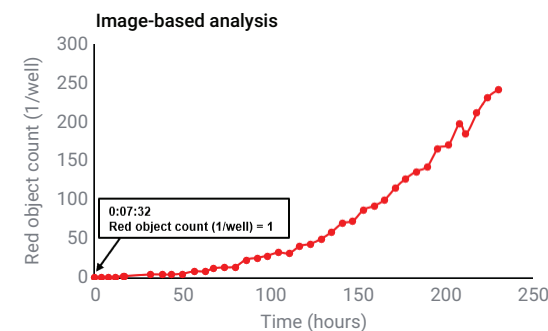
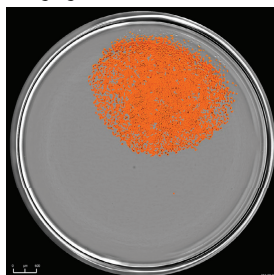
Imaging



Dilution cloning

Easily track cell monoclonal stable cell lines over time using a limited dilution cloning method on eSight. Automatically screen clonal cell lines with minimal effort and high efficiency.

Imaging



Wound healing migration and invasion

Assess the effects of treatments on cell migration profiles and investigate the rate of wound closure. Explore metastatic potential and how various conditions affect or delay healing. Metrics such as wound width, confluence, cell index, object count, and density are easily measurable with automated software.

Imaging

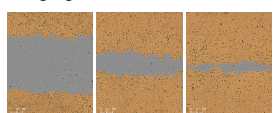
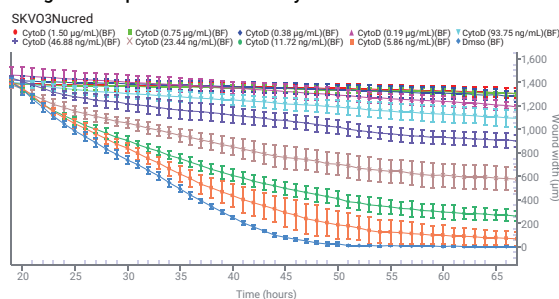


Image and impedance-based analysis



Cell-by-cell analysis

Continuously monitor and quantify single cell segmentation by label-free analysis. Gather cell count and nuclear fluorescent recognition count as a function over time. Measure cell subpopulations over time and gain insights into cellular heterogeneity.

Imaging

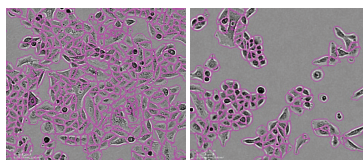
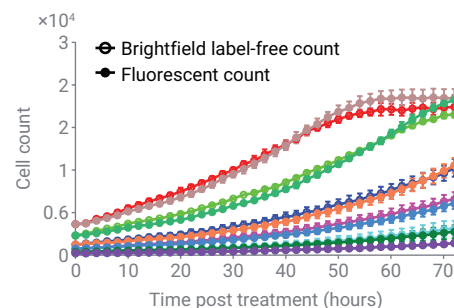


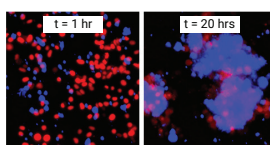
Image-based analysis



Immunotherapy

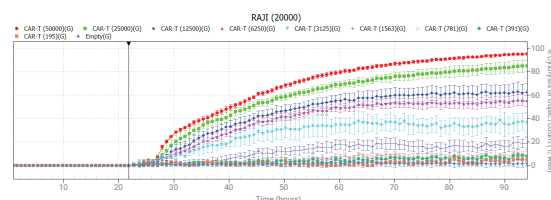
Now easily calculate and convert to % cytotoxicity using imaging parameters to expand your Immunotherapy and Immune Cell Killing Analysis and measure potency with ease.

Imaging



■ Target cell nuclei
■ T cells

Image-based analysis



Learn more:

www.agilent.com/chem/eSight

Contact Agilent's Cell Analysis Tech Support Scientists:
cellanalysis.support@agilent.com

U.S. and Canada

1-800-227-9770

agilent_inquiries@agilent.com

Europe

info_agilent@agilent.com

Asia Pacific

inquiry_lsca@agilent.com

www.agilent.com

Contact OLS OMNI Life Science - Your Partner in Cell Research

OLS OMNI Life Science GmbH & Co. KG
Karl-Ferdinand-Braun-Straße 2
28359 Bremen, Germany
Phone: +49 421 27 61 69 0
info@ols-bio.de • www.ols-bio.com

OLS OMNI Life Science GmbH
Laufenstraße 90
4053 Basel, Switzerland
Phone: +49 421 27 61 69 0
info@ols-bio.ch • www.ols-bio.com

OLS[®]
OMNI Life Science